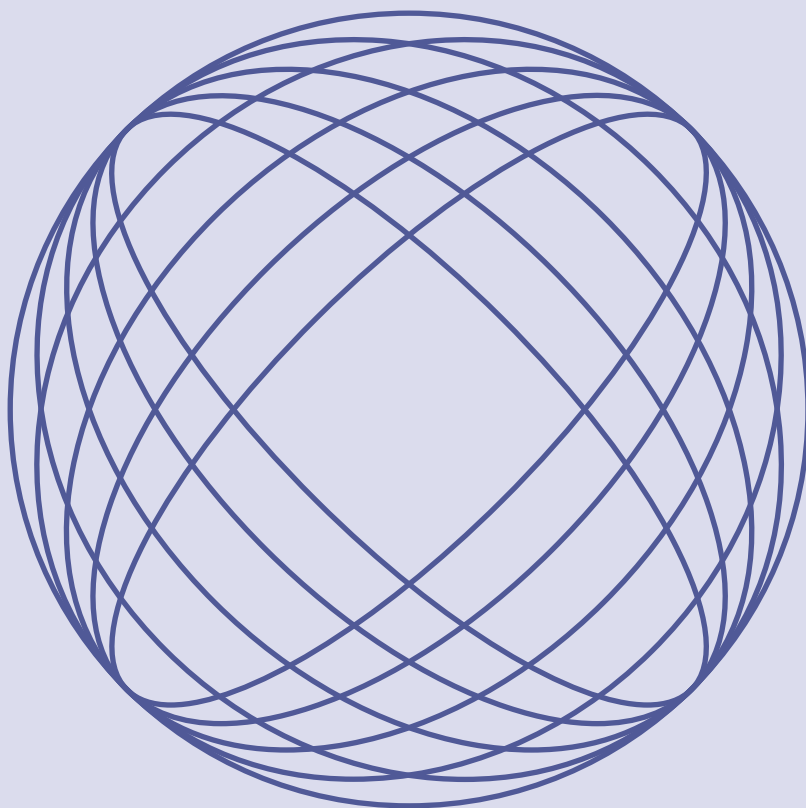


aview:RT ACS

Fully automatic organ segmentation based on artificial intelligence



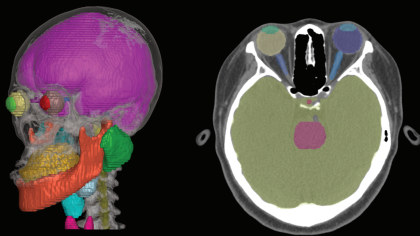
AI solve complicated organ segmentation automatically.

Segmentation of target organ is essential in radiation therapy planning.

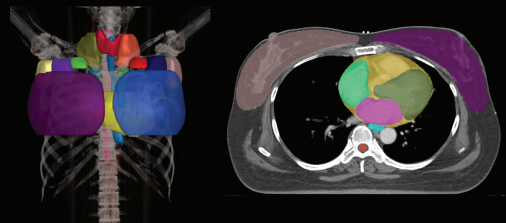
Segmentation of normal organs takes more time than segmentation of lesions, which results in high work fatigue.

aview:RT ACS conducts automatic segmentation of normal organs using deep learning AI technology.

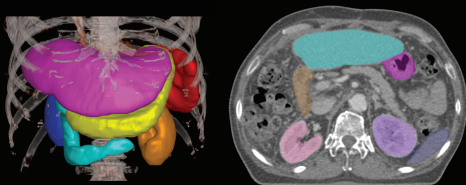
Head & Neck



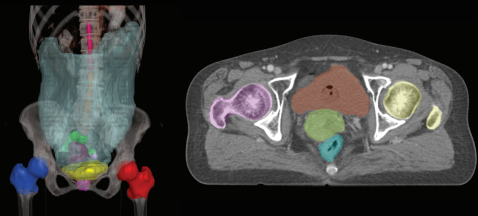
Chest & Breast



Abdomen



Pelvic



Spend more time on treatment planning.

Time-consuming segmentation can be processed automatically

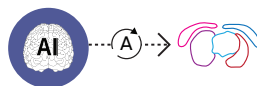
1 CT scan & data transmission

After CT scan for radiation treatment plan, data is transferred to RT ACS.



2 Automatic Segmentation

RT ACS automatically start to segment normal organs upon data upload.



3 Result data transmission to TPS

The segmented data is automatically transmitted to the treatment planning system (TPS)



4 PACS data transfer

TPS develops a treatment plan and conducts radiation oncology treatment.



aview:RT ACS

Fully automatic organ segmentation
based on artificial intelligence

